

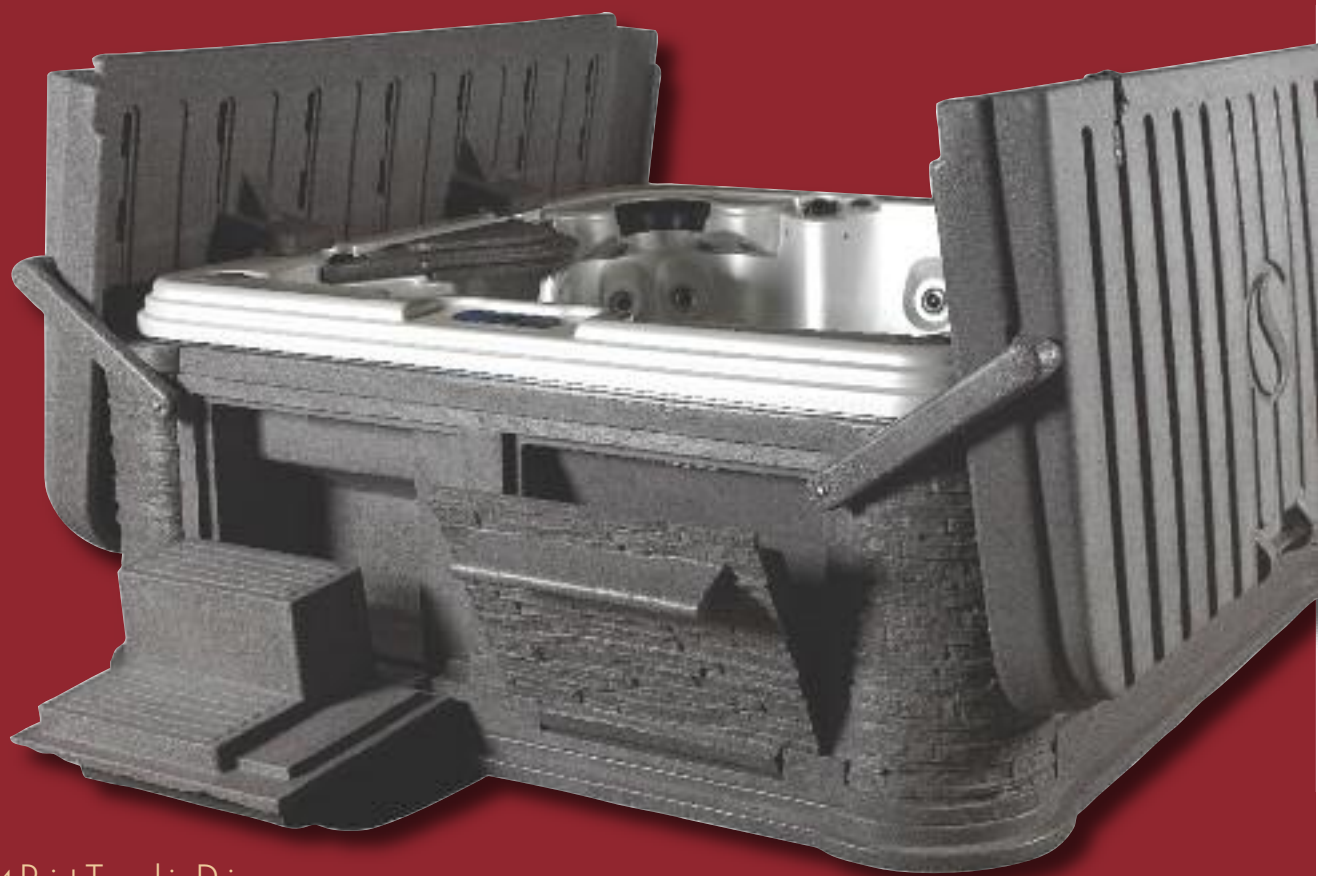
# Luxury, for Life.



 **STRONG**  
POOLS & SPAS, INC.

# Luxury, for Life.

The first spa cabinet with a LIFETIME WARRANTY.



PO Box 108, 3204 Point Township Drive  
Northumberland, PA 17857  
**MADE IN THE USA**



Fax 570-275-2177  
1-800-STRONG-9

[www.strongpoolsandspas.com](http://www.strongpoolsandspas.com)

## INSIDE STRONG:

the 'greenest' spa made



hard covers, step & towel warmers

our **ten** stunning models,  
features, industry innovations, **patents...**  
and a lifetime warranty



the **strongest** rotationally molded spa  
on the market today



3 fun designs



4 GO GREEN  
GO STRONG

6 STRONG'S EXCLUSIVE  
HARD COVER

9 THE STRONG  
ACRYLIC STORY

11 STRONG'S  
ACRYLIC LINE

19 THE STRONG  
ROTATIONAL STORY

21 STRONG'S  
ROTATIONAL LINE

24 ABOVE-GROUND  
POOLS

26 A SPA WARRANTY  
UNSURPASSED

27 2009 STRONG SPA  
SPECIFICATIONS







## Energy Smart

- Our patent-pending, double-walled **FORGE-CAST™** system is extremely energy efficient, reduces noise and still provides easy access to all internal components.
- The unique **THERMO-LOK™** insulation system injects 3.9 lbs. high density foam between the solid resin walls of the dual-walled system resulting in almost zero release of harmful CFCs into the environment and creating a highly efficient thermal environment.
- Heat generated by the pumps in the internal cabinet air space is constantly being **recycled** and utilized by your spa, saving energy and money!



STRONG TECHNOLOGY -

## The Future of Spa Design

- **100% Recyclable** - Strong Spa Cabinets contain no wood or structural metal and are 100% Recyclable!
- **Maintenance Free** - Strong Spa Cabinets will NEVER require maintenance
- **Energy Efficient** - Use less energy and save money with low operating costs. Our pumps filter and heat more water and cost less to operate per day than even a standard 1/16 hp circulating pump!
- **Fewer chemicals** - Corona Ozonator creates a more pure form of ozone. More efficient, cleaner, fewer chemicals.
- Lucite Acrylic shells reinforced with environmentally-sound **Acrylobond**. Releases almost zero harmful Styrene into the atmosphere. It's the **eco-friendly alternative** to fiberglass!

## Strong's Insulated Resin Base

- **Impervious to the elements**
- At just under 3" thick, it's **more than 10x thicker** than most other spa's standard 1/4" base.
- **Sturdy!** Requires **no spa pad**, saving **hundreds of \$\$\$** on installation
- So efficient! **Saves Energy** and keeps your spa **hot, hot, hot!**

\*Spa water kept at 102° with controls in economy mode. Heater operation may vary depending on installation and ambient conditions. Electric cost will vary by region.

A spa cabinet so strong it is  
**Guaranteed for Life**

A spa so efficient it  
**Saves you Money**

**GO GREEN, GO STRONG**

**STRONG:** the greenest spa made...



technologically advanced, 2009 Strong Spas  
are so energy efficient  
they'll run for less than **50¢** per day\*





# STRONG The toughest spa on the market..

## Introducing STRONG's New Hard Cover – The Strongest Spa Cover Ever Made!

One of Strong's most exciting innovations to date...Strong's exclusive matching granite resin Hard Cover is manufactured using the same patent-pending THERMO-LOK™ System used in the Strong cabinet system. 3 lb. high density, closed-cell foam is injected between two solid resin walls creating not only a highly efficient thermal environment but also the Strongest Spa Cover Ever Made! Superior engineering – cover is smartly cantilevered, easily allowing a single adult (while preventing a child) to open cover.

Safe, energy efficient, supports 1,500 lbs and comes with a Lifetime Warranty – Go Green, Go STRONG!

Not available on Monaco.



## Convenient, Foldaway Steps & Towel Warmer

Another Exciting Strong Exclusive...

## Introducing Strong's convenient Foldaway Steps & Towel Warmer

Traditional spa steps can be such a bother – snow, ice, leaves and debris – and there is nowhere to place clean towels. Strong's exclusive Towel Warmer keeps towels warm, dry and within reach and Strong's Foldaway Steps stay clean, dry and safe! With steps neatly folded away, children and pets won't be tempted to climb into your spa when you're not around. Most models are even designed to light up automatically when opened for nighttime safety and style!

... just got tougher!



Our cabinet system comes with a  
**LIFETIME WARRANTY**  
against deterioration of any kind!  
Strong spa cabinets will not crack,  
peel, warp or rot!



Safe. Convenient.  
Energy Efficient.  
Beautiful.

Technological advancements  
make this the greenest,  
toughest and most beautiful  
spa on the market today.



STRONG'S  
EXCLUSIVE

ALL STRONG SPAS –  
MADE in the USA!

STRONG SPAS –  
SHIPPED all over the world!



Strong Pools and Spas, Inc.



Research &  
development,  
manufacturing,  
shipping,  
and customer support  
are all housed in our  
140,000 sq. ft.  
state-of-the-art  
facility in beautiful  
central Pennsylvania.



MADE IN THE USA



# Luxury, for Life.



Shown: The Vienna spa in a Millstone Renaissance cabinet with Sterling Silver acrylic shell and lighted, foldaway steps & towel warmer.

## STRONG ACRYLIC SPAS RESORT LIVING IN YOUR HOME



**T**he latest lifestyle trend has homeowners striving to recreate a spa retreat in their home. Relax, entertain and feel better! The **STRONG** Spa lineup is unlike anything else available. **STRONG** Spas are luxurious, energy efficient and feature the most advanced technological breakthroughs in the industry. Our elegant granite resin **DURA-LAST™** cabinets are beautiful and so durable they can be placed on any level and stable surface *without a spa pad* saving you hundreds of dollars on install costs. Unlike other spa frames, the **STRONG** Spa cabinet will *never* require maintenance and will be just as beautiful in the years to come as the very first day! Wood frames will rot, warp and fade. Steel frames – whether galvanized or powder coated – will rust and weaken but the **DURA-LAST™** cabinet will *never* deteriorate and we guarantee it with the industry's first *lifetime warranty!*



### ENERGY SMART

Our *patent-pending, double-walled FORGE-CAST™* system reduces noise and is extremely energy efficient while still al-

lowing *easy access* to all internal components. The *patent-pending THERMO-LOK™ insulated cabinet base and walls* have a unique *double-walled construction* that is solidly filled with high-density, closed cell foam similar to a thermos or freezer. The heat generated by the pumps in the internal cabinet air space is constantly being *recycled* and utilized by your spa, *saving energy and money!*



### THERAPY FOR THE MIND AND BODY

These days, many people understand and appreciate the physical benefits of hydrotherapy. **STRONG's** Acrylic Spas are designed for maximum hydrotherapeutic benefits. Dedicated *neck & shoulder jets* isolate and massage the areas where most people carry tension. Each **STRONG** Spa is fitted with *fully adjustable Waterway™ jets* which allow you to control the pressure and direction of flow to relieve stress and muscle fatigue. **STRONG** Spas feature incredibly comfortable, ergonomic seating with a combination of *no-float body loungers* and *captain's chairs* for as many as seven adults. While you relax, enjoy the

# The 2009 ACRYLICS

MONACO 20  
MONACO 20 DL  
MONACO 31  
MONACO 31 DL  
Single or double lounger.



SEVILLE 22



EL DORADO 22



BARCELONA 33  
BARCELONA 55



VIENNA 66



MADRID 77



1-800-STRONG-9

*LED* light system that changes color with the touch of a button. A powerful Waterway pump system drives the jets and provides maximum water flow. The sleek topside digital controls are easy to use and will control water temperature to within 1°.



## A COMMITMENT TO THE ENVIRONMENT

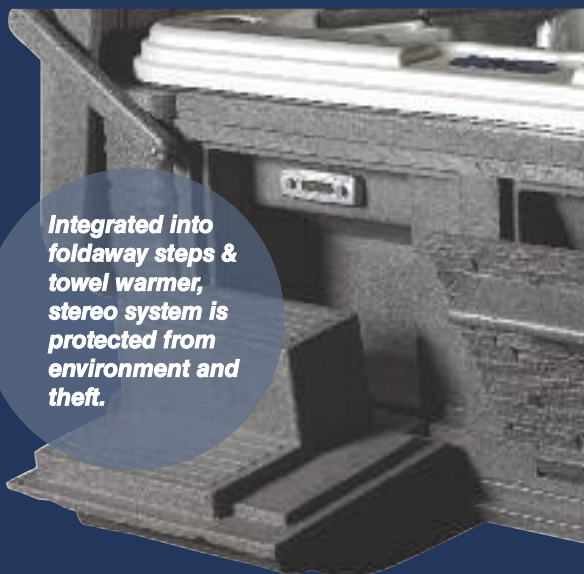
All STRONG Spas are built with a commitment to the environment. Our DURA-LAST™ cabinet is constructed with 30% recycled materials, helping to reduce plastic in landfills. The unique THERMO-LOK™ insulation system injects foam into a closed chamber resulting in almost zero release of CFCs into the environment. STRONG uses Acrylobond®-backed Lucite™ acrylic instead of environmentally unfriendly fiberglass. This eliminates Styrene – a hazardous air pollutant – from the manufacturing process. We achieve all this while offering gorgeous looks and the *lifetime warranty* on the DURA-LAST™ cabinet.



## The Rave JBL STEREO SYSTEM

Only available on the Vienna, Madrid and Barcelona 33 & 55 models.

- (1) MSR7007 DECK  
Waterproof • AM/FM • CD / CD-R / CD-W / MP3 • iPod Ready  
SIRIUS Satellite Radio Compatible
- (1) 200 WATT POWERED SUBWOOFER
- (2) HIGH PERFORMANCE EXTERNAL MOVABLE SPEAKERS (60 WATTS RMS)
- (2) MARINE-GRADE POP-UP SPEAKERS (60 WATTS RMS)



Integrated into  
foldaway steps &  
towel warmer,  
stereo system is  
protected from  
environment and  
theft.



# Hydrotherapy... at home.

## Monaco 20 & Monaco 20 DL **with Double Lounger!**

20 powerful jets and underwater lighting in a space-saving design! Enjoy year-round!



**Balboa™**

**True All-Season Heater!**  
Enjoy your spa any time of the year with our 1kW/4kW convertible heater!

### CABINET COLORS



MILLSTONE GRAY GRANITE SANDSTONE

### ACRYLIC COLORS



STERLING SILVER PEARL SHADOW

### CABINET STYLE RENAISSANCE



JETS	20 BLACK
ALL-SEASON HEATER	1kW/4kW
SEATS	2-3
STEPS & TOWEL	OPTIONAL
UNDERWATER LIGHT	5" LED
NO-FLOAT LOUNGER	YES, 1 or 2

The Monaco 20, seating 2-3 persons, is perfect for a smaller space & a more intimate spa experience..

We offer this beautiful spa with a *single or double no-float lounger!* Other features include: 5" LED underwater light feature; 20 *fully adjustable jets* and a powerful Waterway 1.5hp pump system that drives 170 gpm! All this, and a cabinet that is so durable it can be placed on any stable, level surface, requiring *no spa pad*, saving hundreds of dollars on install costs. The amazing, *patent-pending* STRONG DURA-LAST™ *double-wall insulated cabinet system* will *never* degrade over time and comes with the industry's first *lifetime warranty!*



[www.strongpoolsandspas.com](http://www.strongpoolsandspas.com)

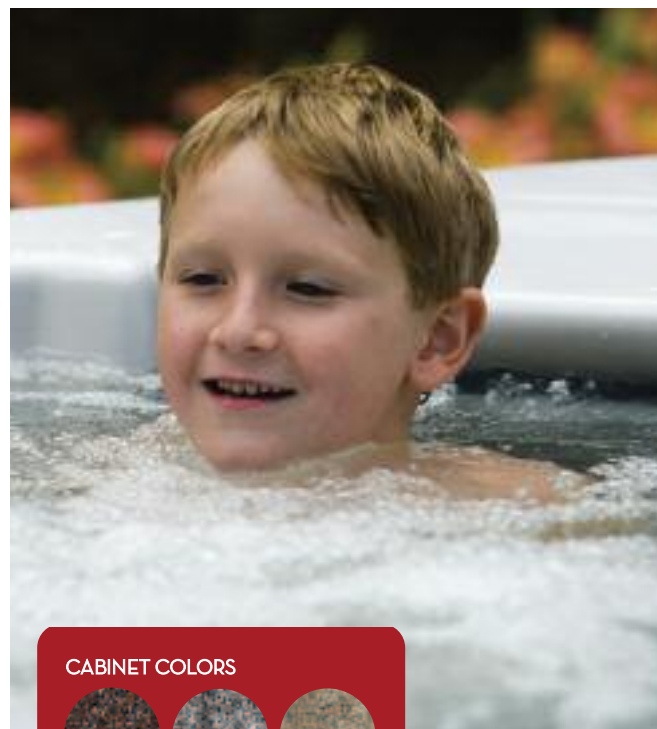
# Luxury living made easy!

## Seville 22



JETS	22 BLACK
ALL-SEASON HEATER	1kW/4kW
SEATS	6
STEPS & TOWEL	OPTIONAL
UNDERWATER LIGHT	5" LED
NO-FLOAT LOUNGER	YES

22 therapeutic jets, foldaway steps & towel warmer, and a no-float lounger... simply relaxing!



### CABINET COLORS



MILLSTONE GRAY GRANITE SANDSTONE

### ACRYLIC COLORS



STERLING  
SILVER

PEARL  
SHADOW



FOLDAWAY STEPS &  
TOWEL WARMER

### CABINET STYLES

RENAISSANCE

SHADOWROCK



Everybody is talking about STRONG! Our technological innovations are some of the most exciting in the industry!

The Seville 22 seats 6 and features our exclusive *foldaway steps & towel warmer*, *no-float lounger*, a gorgeous Lucite™ acrylic shell with MicroBan™ technology and our innovative granite resin *double-walled DURA-LAST™* cabinet system that will never degrade over time and comes with the industry's first *lifetime warranty!* This spa is so durable it can be placed on any stable, level surface, requiring *no spa pad*, saving hundreds of dollars on install costs.

A powerful 1.5hp Waterway pump drives 170 gpm through filter and jets for a clean and invigorating hydrotherapy experience!

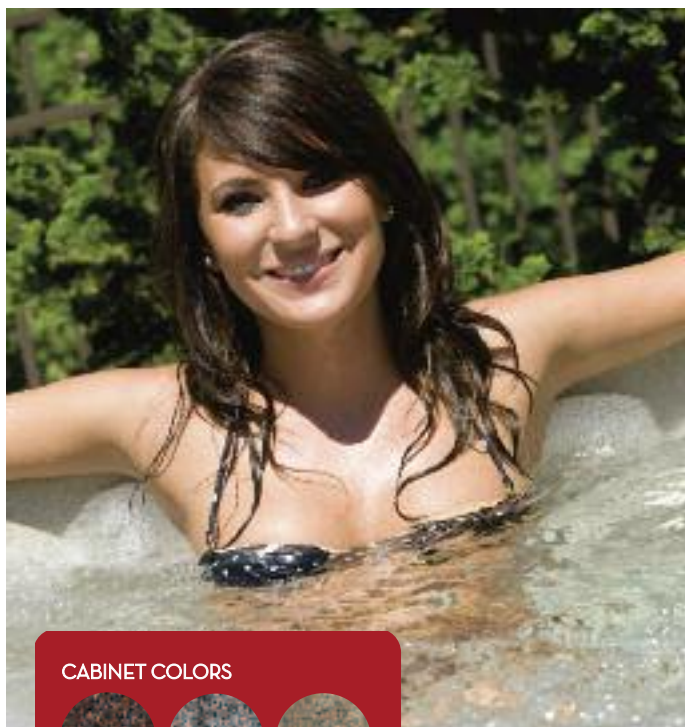
1-800-STRONG-9





# Get the party started!

Room for more! Seats 6-7 adults... and features Strong's exclusive foldaway steps & towel warmer!



## CABINET COLORS



MILLSTONE GRAY GRANITE SANDSTONE

## ACRYLIC COLORS



STERLING SILVER PEARL SHADOW

## CABINET STYLES

RENAISSANCE

SHADOWROCK



FOLDAWAY STEPS & TOWEL WARMER

## El Dorado 22



JETS 22 BLACK

ALL-SEASON HEATER 1kW/4kW

SEATS 6-7

STEPS & TOWEL OPTIONAL

UNDERWATER LIGHT 5" LED

COOLDOWN/STEP-IN YES



The El Dorado 22 spa soothes and invigorates in one gorgeous and affordable package! This spa seats 6-7 and offers the ultimate in ergonomic comfort and convenient *foldaway steps & towel warmer*. Each of the 22 jets, controlled by Balboa's M-7 technology, is fully adjustable, making your massage session a personalized health and wellness experience. A color changing 5" LED underwater light feature helps to set the mood while a powerful 1.5hp Waterway pump drives 170 gpm for hydrotherapeutic massage.

Strong's eco-friendly and energy-smart cabinet is so durable it can be placed on any stable, level surface, requiring *no spa pad*, saving hundreds of dollars on install costs. The amazing, *patent-pending DURA-LAST™ double-walled insulated cabinet system* will *never* degrade over time and comes with the industry's first *lifetime warranty!*



[www.strongpoolsandspas.com](http://www.strongpoolsandspas.com)

# Sophisticated style combined with sophisticated technology.

## Monaco 31 & Monaco 31 DL with Double Lounger!



An intimate spa with elegant LED waterfall and stunning interior and exterior lighting!



The Monaco 31, seating 2-3 persons, is a sophisticated spa perfect for a more intimate spa experience.

This high-end spa features: convenient *foldaway lighted steps & towel warmer*; 6" LED waterfall; 5" LED underwater light feature & 28 points of light; 31 fully adjustable, *stainless steel accented jets* including 4 dedicated hip jets; factory installed ozonator; powerful Waterway 4hp pump moving an *amazing 240 gpm*; and our unique *no-float single or double lounger*. All this and a cabinet that is so durable it can be placed on any stable, level surface, requiring *no spa pad*, saving hundreds of dollars on install costs. The eco-friendly, energy-smart, *patent-pending STRONG DURA-LAST™ double-wall insulated cabinet system* will never degrade over time and comes with the industry's first *lifetime warranty!*



JETS	31 STAINLESS STEEL
SEATS	2-3
OZONE	INSTALLED
STEPS & TOWEL	YES, <i>LIGHTED</i>
WATERFALL	6" LED
UNDERWATER LIGHT	5" LED
POINTS OF LIGHT	28
NO-FLOAT LOUNGER	YES, 1 or 2

### CABINET COLORS



MILLSTONE GRAY GRANITE SANDSTONE

### ACRYLIC COLORS



STERLING SILVER DESERT HORIZON MOONSCAPE PEARL SHADOW STARRY NIGHT DENIM BLUE

### CABINET STYLE RENAISSANCE



*LIGHTED*  
FOLDAWAY STEPS &  
TOWEL WARMER

1-800-STRONG-9



# The entertainment center they'll really love.

Fun starts here for up to 6 of even your tallest friends in free-flow ergonomic seating featuring Strong's exclusive no-float lounge!



## Barcelona 33



Barcelona 33 is serious about hydrotherapy and serious about fun!

Living well is easy with STRONG's unique *foldaway steps & towel warmer*; 5" LED underwater light feature; ozonator; 33 fully adjustable, *stainless steel accented jets*, including 2 dedicated rollover neck & shoulder jets in the captain's chair and a powerful Waterway 4hp pump system that moves an *incredible 240 gpm!*

All this and a cabinet that is so durable it can be placed on any stable, level surface, requiring *no spa pad*, saving hundreds of dollars on install costs. The amazing, *patent-pending STRONG DURA-LAST™ double-walled, insulated cabinet system* will *never* degrade over time and comes with the industry's first *lifetime warranty!*

**JETS** 33 STAINLESS STEEL

**SEATS** 6

**OZONE** INSTALLED

**STEPS & TOWEL** YES

**UNDERWATER LIGHT** 5" LED

**NO-FLOAT LOUNGER** YES

**CAPTAIN'S CHAIRS** 1 (W/ ROLLOVER JETS)

### CABINET COLORS



MILLSTONE GRAY GRANITE SANDSTONE



**FOLDAWAY STEPS & TOWEL WARMER**

### ACRYLIC COLORS



STERLING SILVER DESERT HORIZON MOONSCAPE PEARL SHADOW STARRY NIGHT DENIM BLUE

### CABINET STYLES

RENAISSANCE

SHADOWROCK



**STRONG**  
POOLS & SPAS, INC.

[www.strongpoolsandspas.com](http://www.strongpoolsandspas.com)

# Therapy for mind and body.

## Barcelona 55



Stunning! The Barcelona 55 features ergonomic seating for 6 adults, our exclusive no-float lounger; STRONG's unique *lighted foldaway steps & towel warmer*; beautiful 6" LED waterfall, 5" LED underwater light feature with 16 points of light; ozonator; 55 fully adjustable, stainless steel accented jets, including dedicated rollover neck & shoulder jets powered by a Waterway dual 4hp pump system moving an incredible 480 gpm!

And, of course, the amazing, patent-pending STRONG DURA-LAST™ double-walled insulated cabinet system needs no spa pad, saving you hundreds of dollars on install costs, and comes with the industry's first *lifetime warranty*!

JETS	55 STAINLESS STEEL
SEATS	6
OZONE	INSTALLED
WATERFALL	6" LED
STEPS & TOWEL	YES, <i>LIGHTED</i>
UNDERWATER LIGHT	5" LED
POINTS OF LIGHT	16
NO-FLOAT LOUNGER	YES
CAPTAIN'S CHAIRS	1 (W/ ROLLOVER JETS)



*LIGHTED*  
FOLDAWAY STEPS &  
TOWEL WARMER

### CABINET COLORS



MILLSTONE GRAY GRANITE SANDSTONE

### ACRYLIC COLORS



STERLING SILVER DESERT HORIZON MOONSCAPE PEARL SHADOW STARRY NIGHT DENIM BLUE

### CABINET STYLES

RENAISSANCE

SHADOWROCK



1-800-STRONG-9



# The ultimate use of power.

3 Captain's Chairs – 2 equipped with both personal diverters and auxiliary controls – 100% power perfectly suited for a king & queen!

## Vienna 66



Shown with optional Hard Cover.



**JETS** 66 STAINLESS STEEL

**SEATS** 6-7

**OZONE** INSTALLED

**WATERFALL** MOLDED BACKLIT

**STEPS & TOWEL** YES, **LIGHTED**

**UNDERWATER LIGHT** 5" LED

**POINTS OF LIGHT** 28

**COOLDOWN/STEP-IN** YES

**CAPTAIN'S CHAIRS** 3 (2 W/ROLLOVER JETS, PERSONAL DIVERTERS and AUXILIARY CONTROLS!)



The Vienna 66 Spa is fitted with 66 fully adjustable, *stainless steel* accented jets, including 8 dedicated rollover neck & shoulder jets and 4 hip jets. This spa features seating for seven people including *three deluxe captain's chairs*... two of them equipped with both a *personal Auxiliary Control* to turn pumps on/off without leaving your seat and a *personal Diverter*, able to divert up to 100% of the power of one of the two 5hp pumps – an incredible 300 gpm - through the jets of a single captain's chair! While you relax, enjoy the **LED** light system with 5" main light & 28 *points of light* that changes color with the touch of a button and our gorgeous *custom backlit molded waterfall*. A powerful *dual 5hp Waterway™* pump system drives 600 gpm through the jets for the ultimate spa experience. The sleek *topside digital controls* are easy to use and will control water temperature to within 1°.

### CABINET STYLES

RENAISSANCE

SHADOWROCK



### CABINET COLORS



MILLSTONE



GRAY GRANITE



SANDSTONE

### ACRYLIC COLORS



STERLING SILVER



DESERT HORIZON



MOONSCAPE



PEARL SHADOW



STARRY NIGHT



DENIM BLUE



**LIGHTED**  
FOLDAWAY STEPS &  
TOWEL WARMER

**STRONG**  
POOLS & SPAS, INC.

[www.strongpoolsandspas.com](http://www.strongpoolsandspas.com)

# Smart, sexy & powerful.

The best selling spa of its kind!

## Madrid 77



Madrid 77 is the ultimate convergence of sense and technology. This advanced spa is fitted with 77 fully adjustable, *stainless steel accented Waterway™ jets* including 8 dedicated rollover neck & shoulder jets and 4 hip jets. Seating includes two *deluxe captain's chairs*, each equipped with both a *personal Auxiliary Control* to turn pumps on/off without leaving your seat and a *personal Diverter*, able to divert up to 100% of the power of one of the two 5hp pumps – *an incredible 300 gpm* - through the jets of a single captain's chair! While you relax, enjoy the *LED light system* with 5" main light & 28 *points of light* that change color with the touch of a button and STRONG's *custom backlit light-changing molded waterfall*. A powerful *dual 5hp Waterway* pump system drives an *incredible 600 gpm* for the ultimate in personalized massages. The *sleek topside digital controls* are easy to use and will control water temperature to within 1°.

All this luxury in an eco-friendly, energy-smart, *patent-pending* STRONG DURA-LAST™ *double-wall insulated cabinet system* that will never degrade over time and comes with the industry's first *lifetime warranty!*



JETS	77 STAINLESS STEEL
SEATS	5-6
OZONE	INSTALLED
WATERFALL	MOLDED BACKLIT
STEPS & TOWEL	YES, <i>LIGHTED</i>
UNDERWATER LIGHT	5" LED
POINTS OF LIGHT	28
NO-FLOAT LOUNGER	YES
COOLDOWN/STEP-IN	YES
CAPTAIN'S CHAIRS	2 (w/ROLOVER JETS, PERSONAL DIVERTERS and AUXILIARY CONTROLS!)

### CABINET COLORS



MILLSTONE GRAY GRANITE SANDSTONE

### ACRYLIC COLORS



STERLING SILVER DESERT HORIZON MOONSCAPE PEARL SHADOW STARRY NIGHT DENIM BLUE

### CABINET STYLES



SHADOWROCK



*LIGHTED*  
FOLDAWAY STEPS &  
TOWEL WARMER

1-800-STRONG-9



# So easy. So tough!



Shown: The Antigua spa in Gray Granite resin

## STRONG ROTATIONALLY MOLDED SPAS

**GO GREEN.  
GO STRONG.**

**W**hile the whole world is *thinking green*, Strong continues to be a leader in environmental conservation. Strong Industries has been researching, developing... and patenting... environmentally friendly 'green' technology for years. Strong's focus continues to be on manufacturing the *cleanest, most energy efficient, best performing and longest lasting spas on the market*. And we've done it...

Strong's Rotationally Molded Spas...  
there are just so many reasons to love them!

Strong Rotationally Molded Spas are clean, tough, energy efficient and easy to install. Just plug into a standard 110 volt household outlet and start enjoying or convert to 220 volts for more efficient



### True All-Season Heater!

Enjoy your spa any time of the year  
with our 1kW/4kW convertible heater!



operation. Elegant underwater lighting and all-season heating are fully adjustable with the sleek topside Balboa control panel. Strong Spas also feature convenient access to electrical components, pump and pack through the easy-access, lockable door – without draining, lifting and tearing out of foam insulation!

*These are the perfect four-season spas for even the harshest climates.* Unlike other rotationally molded spas on the market,



# The 2009 ROTATIONALLY MOLDED SPAS



ANTIGUA



CYPRUS



RIO

1-800-STRONG-9

Strong Spas are equipped with *true water heaters*, not friction heaters. Friction spas or heat exchange spas are fair-weather spas that warm and filter water slowly and ineffectively and must run all day long. *Strong spa heaters are energy efficient and much more effective, heating and filtering your spa better while lowering your operating costs and saving you money.*

## Claim to Fame!

Clean, lightweight, energy efficient, portable – most fit through any standard doorframe – and Strong Spas are *virtually indestructible!*

*Seriously!*

Our baseball bat demonstration tells the story (*seen on YouTube.com*). You can bash it over and over! The bat will break but the Strong Spa can take it... no dents, scratches or cracks – we guarantee it.

The Strong Spas innovative unibody construction, in which the body of the spa is integrated into a single unit with the chassis, rather than having a separate body-on-frame, provides unparalleled structural integrity and comes with the *industry's first Lifetime Warranty!*

This spa is so strong it can be placed on any level and stable surface saving you the high cost of buying and installing a spa pad. Other manufacturers are still using outdated steel and wood frame construction. Steel frame spas, whether powder-coated or galvanized, will rust and bend and the weight of the water will eventually collapse the cabinet. Wood frames will rot, twist, warp and will always grow bacteria and mold. Strong's Rotationally Molded Spa is manufactured using 100% FDA approved\*, hypoallergenic resin which *prohibits the growth of bacteria and mold*. The science of Strong not only produces a cleaner spa but the unibody construction prohibits the intrusion of vermin and other unwanted pests.

Superior design, superior technology and all backed with the industry's first Lifetime Warranty.



*Granite resin components are rotationally molded and spas are fully manufactured at our 140,000 sq. ft. facility in beautiful central Pennsylvania.*



*\* Resin meets the FDA's stringent food additive regulations.*

# Family, friends and fun!

## Antigua

A very roomy spa! Take it home, plug it in... and use it tonight!



JETS	26 STAINLESS STEEL
ALL-SEASON HEATER	1kW/4kW
SEATS	6
OZONE	INSTALLED
WATERFALL	6" LED
UNDERWATER LIGHT	3" LED
COOLDOWN/STEP-IN	YES
STORAGE STEPS	NOT INC, BUT AVAIL
ICE BUCKET	1 INCLUDED
TRAY	1 INCLUDED



Matching  
Storage  
Steps  
Available!

The Toughest Spa on the Market!  
Our cabinet system comes with a  
**LIFETIME WARRANTY**  
against deterioration of any kind!



### STRONG SPA COLORS



MILLSTONE



GRAY GRANITE



SANDSTONE



**STRONG**  
POOLS & SPAS, INC.

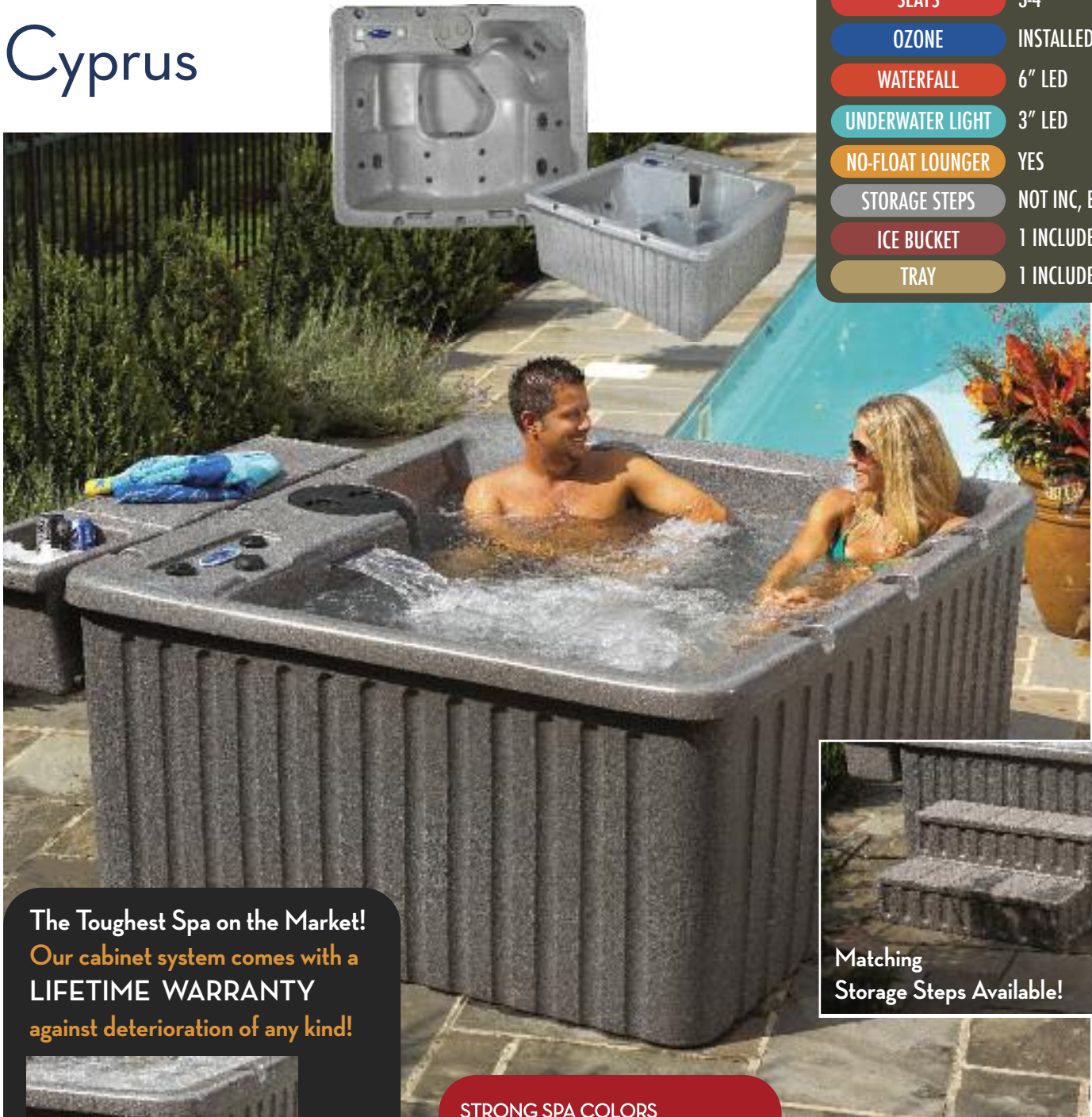
[www.strongpoolsandspas.com](http://www.strongpoolsandspas.com)



# Best seller!

Luxury lounge, affordable price & fits through the door!

## Cyprus



JETS	18 STAINLESS STEEL
ALL-SEASON HEATER	1kW/4kW
SEATS	3-4
OZONE	INSTALLED
WATERFALL	6" LED
UNDERWATER LIGHT	3" LED
NO-FLOAT LOUNGER	YES
STORAGE STEPS	NOT INC, BUT AVAIL
ICE BUCKET	1 INCLUDED
TRAY	1 INCLUDED

The Toughest Spa on the Market!  
Our cabinet system comes with a  
**LIFETIME WARRANTY**  
against deterioration of any kind!



Matching  
Storage Steps Available!

### STRONG SPA COLORS



MILLSTONE



GRAY GRANITE



SANDSTONE





# Affordable luxury.

Luxury, hydrotherapy and fun all in one very affordable and easy to use package!

## Rio



JETS	14 STAINLESS STEEL
ALL-SEASON HEATER	1kW/4kW
SEATS	6
UNDERWATER LIGHT	3" LED
COOLDOWN/STEP-IN	YES
STORAGE STEPS	NOT INC, BUT AVAIL
ICE BUCKET	NOT INC, BUT AVAIL
TRAY	NOT INC, BUT AVAIL

**The Toughest Spa on the Market!**  
Our cabinet system comes with a **LIFETIME WARRANTY** against deterioration of any kind!



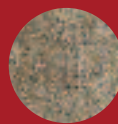
### STRONG SPA COLORS



MILLSTONE



GRAY GRANITE



SANDSTONE



Matching Storage Steps Available!

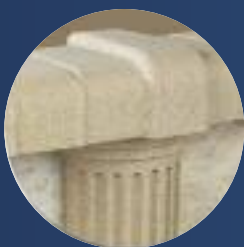


**STRONG**  
POOLS & SPAS, INC.

[www.strongpoolsandspas.com](http://www.strongpoolsandspas.com)

# FORGE-CAST™ quality in every detail.

More durable than any pool on today's market, the Colosseum is FORGE-CAST™ from granite resin, guaranteed to last for as long as you own your pool. Classical 12" top ledges and 12" wide vertical posts deliver unmatched beauty and support and an elegant Mediterranean wall pattern provides continuous aesthetic appeal.



## GRANITE RESIN TOP LEDGE

- 12" wide for optimal support.
- Slight inward slope prevents water loss.
- Safe, skid-resistant texture.
- Completely enclosed for maximum strength.
- Backed by a lifetime warranty!



## GRANITE RESIN COLUMNS

- Unprecedented vertical support.
- Exclusive 15.25" x 8" foundation plate.
- Roman styling.
- Completely enclosed.
- Backed by lifetime warranty.



## STEEL EXTERIOR WALL

- Elegant Mediterranean pattern.
- Commercial-grade steel.
- Finished with high-strength clear resin.

## The Colosseum Riser™

**A patent-pending  
STRONG exclusive!**

- \* lifts the wall 2 inches off the ground, protecting the wall from ground water erosion.
- 5 inch high base track protects the outside wall from mowing, weedwhacking and landscaping.
- provides greater depth and enhances overall look of the pool.

## OPTIONAL ACCESSORIES

Both backed with the same lifetime warranty as the rest of our granite resin pool components.

### Colosseum Fence

Classic style offers protection and beauty!

### Colosseum Fountain

Lovely, yet invisible when not in use.  
Fully adjustable.



# FORGE-CAST™ to Last!

## The Colosseum Round

Pool height: 53 1/2"  
Available in the following  
diameters:  
18', 21', 24', 27', 30' and 33'



## The Colosseum RISER™

Pool height: 55 1/2"  
Available in the  
following diameters:  
18', 21', 24', 27', 30'  
and 33'



## The Colosseum Oval

Pool height: 53 1/2"  
Available in the  
following sizes:  
16' wide x 27' long  
16' wide x 32' long  
18' wide x 34' long  
18' wide x 40' long





# The **unprecedented** STRONG SPA WARRANTY

**Spa cabinets guaranteed for life!**  
**Believe it!**

**Acrylic Spa Cabinet/Hard Cover/Rotationally Molded spas:** *Guaranteed for as long as the original purchaser owns the product*  
Strong Spas warrants the original retail purchaser the integrity of the spa's cabinet structure will not warp, rot, crack or peel for as long as the customer shall own the spa. (repair or replacement)

**Acrylic Spa Surface: 5 years**

Strong Spas warrants the original retail purchaser the surface integrity of the spa against blistering or delaminating as a result of defects in material or workmanship for a period of 5 years. (repair or replacement)

**Plumbing & Equipment: Acrylic Spas**

Strong Spas warrants the original retail purchaser the integrity of the spa's plumbing against leaks as a result of defects in material or workmanship for a period of 2 years (parts and labor). Strong Spas warrants the original retail purchaser the integrity of the spa's Equipment Pack (pumps, heater, control system) to be free from defects in material and workmanship for a period of 2 years (parts and labor) from the date of the original retail purchase.

**Plumbing & Equipment: Rotationally Molded Spas**

Strong Spas warrants the original retail purchaser the integrity of the spa's plumbing against leaks as a result of defects in material or workmanship for a period of 1 year on Antigua & Cyprus, 90 days on Rio (parts) and all rotationally molded spas 90 days on labor\*. Strong Spas warrants the original retail purchaser the integrity of the spa's Equipment Pack (pumps, heater, control system) to be free from defects in material and workmanship for a period of 1 year on Antigua & Cyprus, 90 days on Rio (parts) and all rotationally molded spas 90 days on labor\* from the date of the original retail purchase. \*Maximum reimbursement: \$70.

**Warranty Specifics**

**Ozonators** - Strong Spas warrants the original retail purchaser that the factory installed ozonators will not malfunction due to defects in workmanship for a period of 1 year from the date of the original retail purchase (90 days on Rio).

**Cabinet Structure and Hard Cover** - Strong Spas warrants the original retail purchaser that the factory installed acrylic series Cabinet Structure and acrylic series Hard Cover will have a lifetime warranty.

**LED Lighting** - Strong Spas warrants the original retail purchaser that the factory installed LED Lighting System will have a 1 year warranty (90 days on Rio) to be free from defects in workmanship and materials from the date of the original retail purchase.

**Sound System** - Strong Spas warrants the original retail purchaser that the factory installed Sound System will have a 90 day warranty to be free from defects in workmanship and materials from the date of the original retail purchase.

**Exclusions**

This limited warranty is enforceable only by the original retail purchaser. Fuses, covers, light bulbs, light lenses, spa pillows, seals on pump and motor, and any dealer installed accessories are specifically excluded from this limited warranty.

• All warranties are null and void if any of the following occur:

- the spa has been subject to alteration, neglect, misuse or abuse.
- any damages caused by failure to install, maintain, and operate the spa in accordance with the recommendations contained in Strong Spas Owners Manual.
- any and all costs of spa's removal and replacement including but not limited to removal and transportation, damages to landscaping, house structures.
- the spa has been used in a non-residential application or an application in which it was not designed.
- spa shell damage caused by excessive heat build-up due to failure to cover the spa while empty of water and/or exposure to direct sunlight.
- any damages caused by improper maintenance of spa water chemistry or by any undissolved spa chemicals which may cause bleaching of the spa shell and erosion or discoloration of stainless jets.
- any repairs that are done by any one other than authorized Strong Spas agent, or anyone without expressed written permission by Strong Spas warranty department.



**DISCLAIMERS**

ALL IMPLIED WARRANTIES ARE NULL AND VOID IF THE RETAIL PURCHASER FAILS TO RETURN THE SPA'S WARRANTY CARD BACK TO THE MANUFACTURER-SUPPLIED WARRANTY ADDRESS WITHIN 30 DAYS FROM DATE OF PURCHASE. STRONG SPAS AND ITS AUTHORIZED AGENTS SHALL NOT BE LIABLE FOR ANY INJURY, LOSS, COST OR OTHER DAMAGE, WHETHER INCIDENTAL, CONSEQUENTIAL, SPECIAL OR PUNITIVE, ARISING OUT OF ANY DEFECT COVERED BY THIS LIMITED WARRANTY, INCLUDING WITHOUT LIMITATION, LOSS OF USE OF THE SPA AND COST FOR REMOVAL OF DEFECTIVE PRODUCT, EVEN IF STRONG SPAS HAS BEEN ADVISED OF THE POSSIBILITY OF SUCH DAMAGE, THE LIABILITY OF STRONG SPAS UNDER THIS LIMITED WARRANTY, IF ANY, SHALL NOT EXCEED THE ORIGINAL AMOUNT PAID FOR THE DEFECTIVE PRODUCT. COVERAGE UNDER THIS LIMITED WARRANTY SHALL COMMENCE AS OF THE ORIGINAL DATE OF PURCHASE AND THE DURATION OF SUCH COVERAGE SHALL NOT EXTEND FOR ANY REASON WHATSOEVER BEYOND THE STATED TIME PERIOD. THESE DISCLAIMERS SHALL BE EQUALLY APPLICABLE TO ANY SERVICE PROVIDED BY STRONG SPAS OR ITS AUTHORIZED AGENTS.

**LIMITATIONS**

THIS LIMITED WARRANTY IS NON-TRANSFERABLE AND ONLY APPLIES TO THE ORIGINAL PURCHASER. THIS LIMITED WARRANTY SUPERSEDES THE PLACE OF ALL OTHER WARRANTIES EXPRESSED OR IMPLIED, IN FACT OR AT LAW, INCLUDING IMPLIED WARRANTIES OF FITNESS FOR A PARTICULAR PURPOSE. ALL WARRANTY SERVICE MUST BE AUTHORIZED BY STRONG SPAS AND PERFORMED BY ITS AUTHORIZED AGENT. NO DEALER, DISTRIBUTOR, SERVICE COMPANY, OR OTHER PARTY IS AUTHORIZED TO CHANGE, MODIFY, OR EXTEND THE TERMS OF THIS LIMITED WARRANTY IN ANY MANNER WHATSOEVER.

# 2009 STRONG US SPECS

1-800-STRONG-9 [www.strongpoolsandspas.com](http://www.strongpoolsandspas.com)



2009 STRONG SPAS	Jets	Dimensions (in inches)	Voltage	Heater	Pumps	Ozone	Gallons	Step & Towel	Lights	Waterfall	Seats	No-Float Lounger	Captains Chairs w/ Rollover Jets	Internal Steps/ Cooldown Seat
Monaco 20	20 BLK	92x66x36	110/220	1kw/4kw	1 x 1.5hp	Ready	222	Optional	5" LED	No	3	Yes, 1	No	No
Monaco 20 DL Double Lounger	20 BLK	92x66x36	110/220	1kw/4kw	1 x 1.5hp	Ready	222	Optional	5" LED	No	2-3	Yes, 2	No	No
Monaco 31	31 SS	92x66x36	220	4 kw	1 x 4hp	Yes	222	Yes, Lighted	5" LED & 28 Points	6" LED	3	Yes, 1	No	No
Monaco 31 DL Double Lounger	31 SS	92x66x36	220	4 kw	1 x 4hp	Yes	222	Yes, Lighted	5" LED & 28 Points	6" LED	2-3	Yes, 2	No	No
Seville 22	22 BLK	92x92x36	110/220	1kw/4kw	1 x 1.5hp	Ready	380	Optional	5" LED	No	6	Yes	No	No
El Dorado 22	22 BLK	92x92x36	110/220	1kw/4kw	1 x 1.5hp	Ready	400	Optional	5" LED	No	6-7	No	No	No
Barcelona 33	33 SS	92x92x36	220	4 kw	1 x 4hp	Yes	350	Yes	5" LED	No	6	Yes	Yes, One	No
Barcelona 55	55 SS	92x92x36	220	5.5 kw	2 x 4hp	Yes	350	Yes, Lighted	5" LED & 16 Points	6" LED	6	Yes	Yes, One	No
Vienna 66	66 SS	92x92x36	220	5.5 kw	2 x 5hp	Yes	350	Yes, Lighted	5" LED & 28 Points	Molded	6-7	No	Yes, Three, (2 w/ rollover)	Yes
Madrid 77	77 SS	92x92x36	220	5.5 kw	2 x 5hp	Yes	350	Yes, Lighted	5" LED & 28 Points	Molded	5-6	Yes	Yes, Two	Yes
Antigua	26 SS	79x34.5	110/220	1kw/4kw	1 x 1.5hp	Yes	280	NA	3" LED	6" LED	6	No	No	Yes
Cyprus	18 SS	62x71x29	110/220	1kw/4kw	1 x 1.5hp	Yes	216	NA	3" LED	6" LED	3-4	Yes	No	No
Rio	14 SS	70x29	110/220	1kw/4kw	1 x 1.5hp	Ready	222	NA	3" LED	No	6	No	No	Yes

# Luxury, for Life.

The first spa cabinet with a LIFETIME WARRANTY.



PO Box 108,  
3204 Point Township Drive  
Northumberland, PA 17857  
**MADE IN THE USA**

Fax 570-275-2177  
1-800-STRONG-9

[www.strongpoolsandspas.com](http://www.strongpoolsandspas.com)

